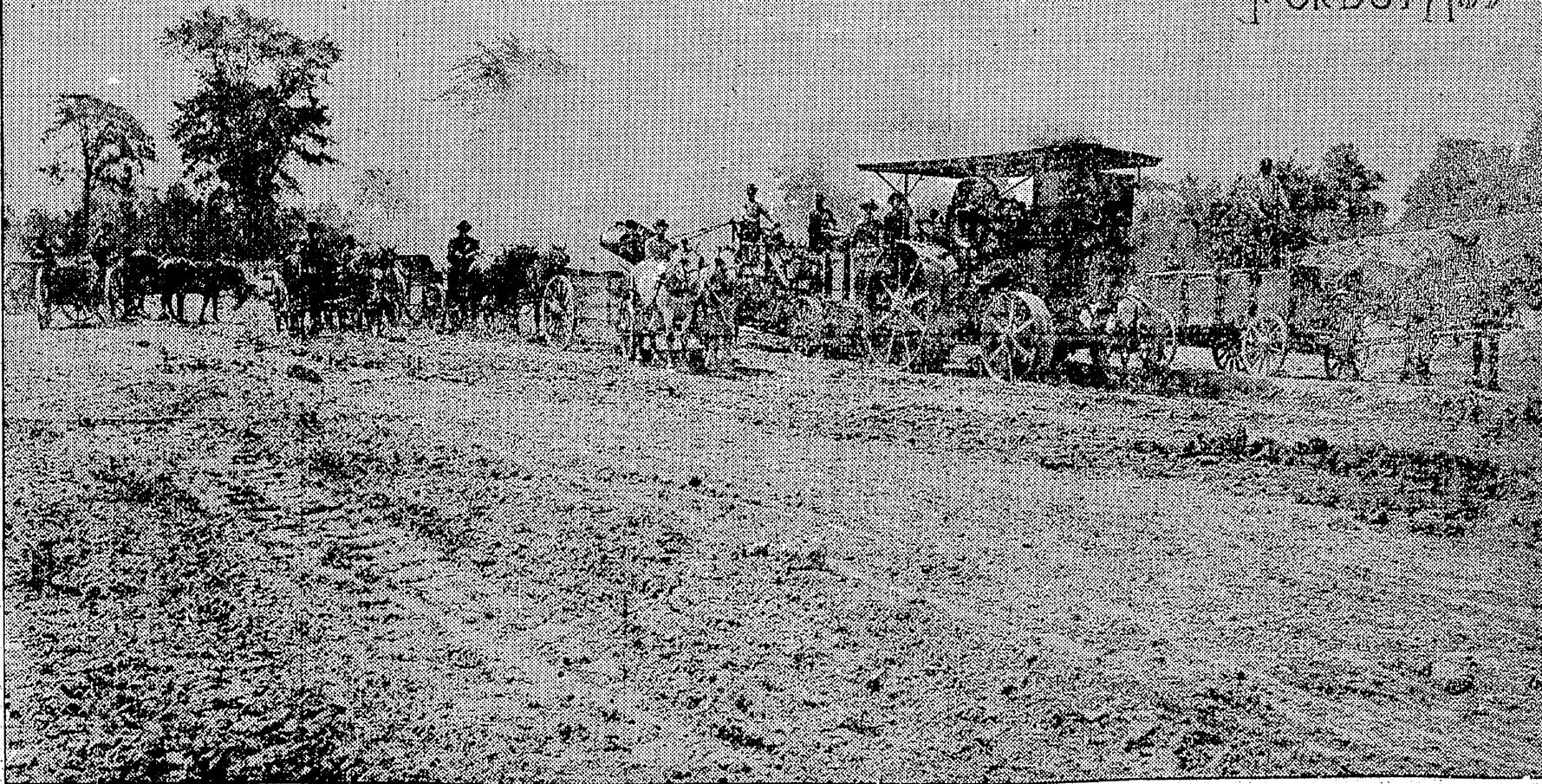


20TH CENTURY
DEVELOPMENT
IN
FOREST HILL



The above is an exact reproduction from photo—showing our modern grading machinery in operation—on Washington Boulevard—(86 feet wide), another of the new streets being opened in the western section of Forest Hill. This machinery cuts—carries and loads—over two tons of dirt, direct into wagon in 30 seconds.

Rapid development—rapid growth in “home building,” creating rapid increase in valuation—farm lands turned into streets of homes in less than one year—choice location—all the beauties of high lying country—trees, valleys, natural shrubbery, grassy slopes and pure atmosphere—with all the advantages of the city—best car line in the city passing the property—30 minutes down town. All these and many more are the reasons why you should investigate—Forest Hill.

Euclid Heights car to Coventry Road and Euclid Boulevard.

The Deming Realty Co.

358-360-362 The Arcade

“SEND FOR BOOKLET.”