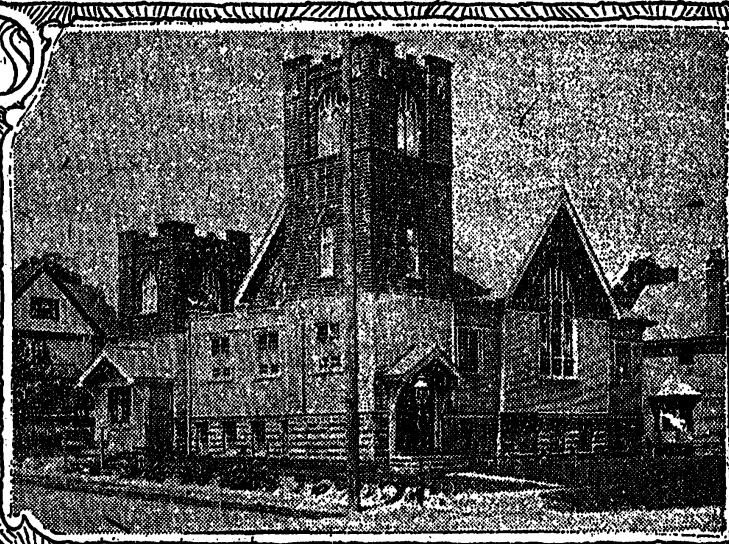
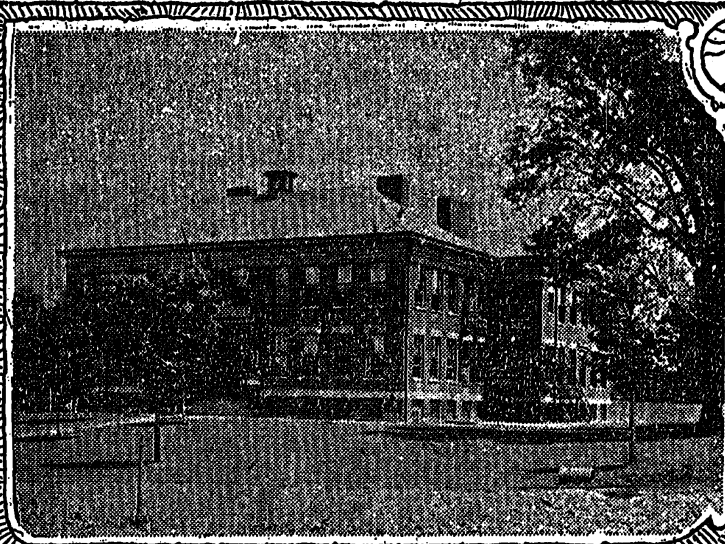


BEAUTIFUL FOREST HILL ALLOTMENT



Cleveland Heights high school, one block from Forest Hill Allotment.

The Methodist church at the very door of Forest Hill allotment.

GREATER CLEVELAND

Remarkable as the growth of CLEVELAND has been, the city is really in its infancy. The low land of Cleveland—the site of the original city—has almost reached the limits of its capacity to grow. Factories and industrial encroachments are slowly but surely crowding the residence community of Greater Cleveland toward the HIGHLANDS of CLEVELAND HEIGHTS. It is impossible to predict what enormous prices certain well chosen properties about the Cleveland

soon to be, will bring in a few years hence. After all, it is a well beaten path that leads to success in REAL ESTATE INVESTMENTS.

Determine where the people want to Live and then buy before they reach there

You need not go astray. Common sense and determination are the elements of success in REAL ESTATE investments. For investment never buy property where conditions are completed. BUY only where there is a future. IT'S MORE PROFITABLE. Those who are reaping large profits today did not delay, linger and wait. You can do likewise if you act and act promptly. Being thoroughly convinced of your opportunity, do not let it slip through your fingers to be grasped by somebody else, but seize it at once—BUY THE "LAND"—then bide your time, and the steady, rapid growth of Greater Cleveland will do the rest. The late Russell Sage gave this advice to people: "Buy real estate in the outlying districts of any growing city. Then work hard at your usual business. Your real estate purchases will make your old age comfortable."

Forest Hill Allotment

On the HIGHLANDS of "CLEVELAND HEIGHTS," offers all the delightful conveniences of a city home without the burden and expense of city property. The future of "FOREST HILL ALLOTMENT" is the strongest argument in its favor—therefore the investment is especially good just at this time. Located at the very edge of this great growing city, surrounded with many natural and acquired advantages, connecting to Cleveland's interceptor sewer system, and supplied with city water, gas, electric light, telephone service, etc.—yet the taxes amount to only a few cents a year.

The nearness to the source and supply of dairy and farm

Among the Glens of Glenwood Boulevard.

products lessens the cost of living expenses.

The high school is but one block from "FOREST HILL ALLOTMENT." Churches of various denominations are within a walking distance. Delightful pure air, picturesque natural scenery, PARKS, BOULEVARD and well shaded glens are all about beautiful FOREST HILL ALLOTMENT. 350 feet above LAKE ERIE, away from the factories, railroads, smoke and dirt. Just a 35 minutes' ride to the Public square. If you want to make an investment that will mean large profits for you and your family—buy one or more lots on "FOREST HILL ALLOTMENT" at once. Start each one of the children with an equity in one or more lots on "FOREST HILL ALLOTMENT." The community will grow much faster than they grow and serve as a valuable nest egg when they have reached young manhood and young womanhood. You can buy lots on "FOREST HILL ALLOTMENT" on the BANK SAVINGS ACCOUNT PLAN.

This is an opportunity knocking at your door. Don't drive it away, as OPPORTUNITIES are BALD-HEADED and hard to catch again. Grasp the opportunity while you can. It only raps once. Assistants will meet you at the property any day and fully explain our banking plan, or if you will make an appointment with us by phone or otherwise, we will call for you in one of our automobiles and take you for a drive through the parks and boulevards to

BEAUTIFUL FOREST HILL ALLOTMENT

Take a EUCLID HEIGHTS car and get off at the corner of COVENTRY ROAD and EUCLID HEIGHTS BOULEVARD—go a short distance eastward, or take one of our automobiles to the allotment office at the sign of the tree.

The Cleveland Heights Realty Co.

GEO. H. CANNIFF, Sales Mgr.
Phone Cent. 330.

Temporary Offices 609 American Trust Bldg.
Permanent Office, Hippodrome Bldg.

